

marantz®

INTEGRATED STEREO AMPLIFIER PM-15S1 SA-CD PLAYER SA-15S1



FEATURES

- Current Feedback Topology
- Linear volume control
- Floating control bus system
- Power Transformer
- Toroidal
- HDAM
- SA2 / Current Feedback
- Construction: Twin mono / 3-Stage circuit
- Symmetric PCB Layout
- Customized & High Grade Audio Components
- Current Feedback phono equalizer
- Low noise LCD display

INPUTS/OUTPUTS

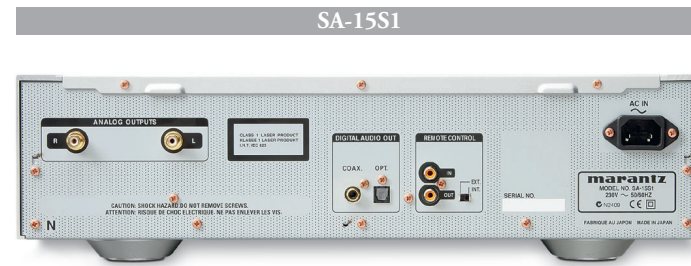
- Audio Inputs 6
- Phono Input MM/MC
- Audio Outputs 2
- Gold Plated Cinch
- Speaker Terminal WBT
- Headphone Out

SPECIFICATIONS

- Power Output (8/4 Ohm RMS) 90/140 Watts
- Frequency Range 5Hz-40KHz (8ohms,0.05%)
- Frequency Response 5Hz-100kHz +/-3dB
- Damping Factor 110
- Input Sensitivity: MM 2.5mV / 47kOhm
- Input Sensitivity: MC 230µV / 100Ohm
- Input Sensitivity: High level 220mV / 10kOhm
- Signal to Noise Ratio: High level 112dB
- Signal to Noise Ratio: MM/MC 88/74 dB

GENERAL

- Available colors Platinum / Gold
- Maximum Dimensions (W x D x H) 440 x 123 x 464
- Weight 18Kg



FEATURES

- CD Compatibility: CD / CD-R/RW / SA-CD
- Customized & High Grade Audio Components
- Symmetric circuit layout
- HDAM
- SA / Current Feedback
- Relay muting
- Zero Impedance Matching joint (copper)
- Current Feedback headphone circuitry
- Low Noise LCD display
- Double layer bottom plate

PLAYBACK

- Program Play 30
- Auto Music Scan (AMS)
- Quick Replay

INPUTS/OUTPUTS

- Analogue Out (Cinch) 2ch
- Digital Optical & Coaxial Out
- Headphone Out with Volume Control

SPECIFICATIONS

- DAC IC CS4397
- Output Buffer HDAM+Current
- Frequency Response SACD 2Hz-50kHz (+0, -3dB)
- Frequency Response CD 2Hz-20kHz
- Dynamic Range SACD / CD 111dB / 100dB
- Channel Separation SACD / CD 100dB / 100dB

GENERAL

- Available colors Platinum / Gold
- Maximum Dimensions (W x D x H) 440 x 123 x 418
- Weight 13.5Kg



because music matters

All specifications, dimensions and weights are subject to change without notice. ©2005 Europe B.V. 05/05

marantz®

Marantz Europe B.V., P.O. Box 8744,
5605 LS Eindhoven, Holland
www.marantz.com

www.marantz.com

A partnership in audio excellence

Developing successors for the widely appraised 17-series products was a real challenge. Inspired by the already legendary SC-7/MA-9 combination and derived from the top class 11-series we proudly present you the new Marantz 15-series.

The new PM-15S1 amplifier and SA-15S1 (SA)CD player enclose a stunning array of technology and craftsmanship, reflecting our engineers' passion for pure music, and their dedication to the audiophile community.

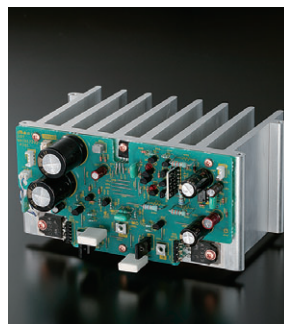
Coupling state of the art design, engineering and outstanding performance we feel our engineers have created a worthy successor. Both products are built according to the new Marantz premium design without any visible screws, a heavy double layer chassis and a subtle blue illuminated front.

Integrated stereo amplifier PM-15S1

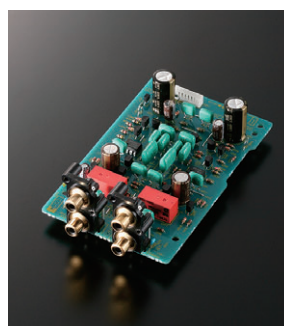
The PM-15S1 has a 3-stage construction, with new Current Feedback HDAMs for perfect stereo imaging and dynamic sound performance. For true clarity, it features, symmetrical signal paths and independent left / right heatsinks. To further enhance signal performance, external noise has been minimized by a solid chassis construction with additional bottom plate and the design includes the shortest possible signal path, using the best components available. For precise linear volume control, we once again use the Wolfson WM8816, with a top quality Current Feedback MM/MC phono stage meeting the needs of the true audiophile.



Power Transformer



Current Feedback Power amp



Current Feedback MM/MC Phono stage



Customised Components

Super Audio satisfaction guaranteed

Marantz understands music and the people who love it. Which is why the PM-15S1 offers a wide bandwidth, best channel separation and minimum cross-talk, in the tradition of the hugely popular PM-11S1. Its oversized power supply with low impedance toroidal transformer is capable of handling a high current, offering an astonishing sound reproduction even on critical speakers that is beyond the reach of anything else in this price bracket.

Current Feedback Amplification

Instead of the usually used voltage feedback construction Marantz adopted Current Feedback technology, making it even faster, extending its bandwidth and make it less sensitive on critical speakers for a much more accurate and realistic sound. Also on capacitive and inductive impedance the power output keeps stabil over the whole frequency range.

New HDAM SAs outperform standard Op-amps

Standard operational amplifier ICs do not meet the high standards set by Marantz, prompting us to design our new proprietary HDAMs built of discrete components, which offer more detail, accuracy and a more dynamic sound by a high slew rate and amazing signal to noise ratio.

Choke input system

Rectifier harmonic noise in the PM-15S1 power supply for the audio input board has been drastically reduced by adopting the choke input topology, which is especially suited to a control amplifier where very small signal amplification is handled.

Floating control bus

With a single remote control you can synchronously drive up to 4 PM-15S1s, using the floating control bus system connection. Choose from a real bi-amping set up or multi-channel application, where you can expect superb sound and unbelievable channel separation, by trimming each separate channel with your remote, for the optimal sound field.

High performance system clock

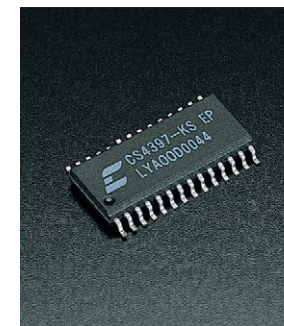
The D/A converter is served by a high precision clock, positioned nearby to prevent jitter and signal distortion, improving audio fidelity and performance.

High resolution Super Audio

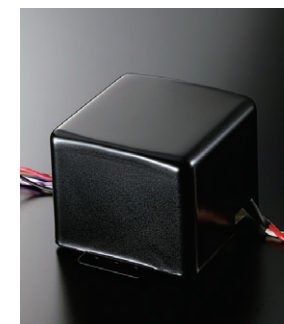
Based on the DSD conversion principle, SA-CD combines an upper limit frequency of 100 kHz and dynamic range of 120 dB with superb overall sound quality. This means you can enjoy the original sound as it was intended, with faithful reproduction of each instrument's unique 'voice'.

Current Feedback HDAMs

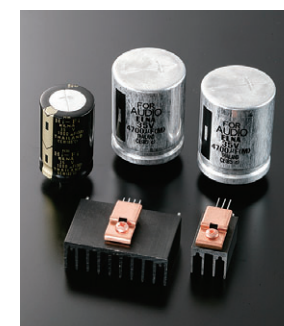
SA-CD playback demands fast signal handling and high bandwidth, which is why the SA-15S1 features Marantz' renowned HDAM modules in the output stage. Proprietary Current Feedback HDAM modules play an important role in the SA-15S1 analogue audio circuitry, doubling as a buffer amplifier and Low Pass Filter. Both channels in the discrete circuitry feature absolutely identical components and layout – essential for a truly breathtaking sound stage.



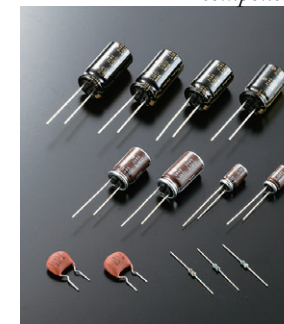
CS4397 DAC



Power Transformer



High Quality power supply component



Customised Components

Only excellence is enough

Marantz engineers only use the world's finest standard components in their designs. When no component is available to meet their high standards, there is only one solution: they develop their own. Custom-made components inside the SA-15S1 include new stress-free electrolyte capacitors and the Schottky diodes, which also feature in the rectifier circuitry. The audio circuitry uses high-grade electrolytic and film capacitors, to ensure the excellence you demand from Marantz products.

The beauty of the SA-15S1

A solid chassis, additional button plate and shock-absorbing feet are just some examples of the attention to detail you will enjoy with the SA-15S1. For the best contact solid RCA terminals are built in and have been mounted on a zero impedance matching point. The customized components are symmetrically arranged, and all parts of the system work in perfect harmony. All of which enables the SA-15S1 SA-CD player to faithfully reproduce even the most complex musical compositions in your collection.

SA-CD player SA-15S1

Enjoy reference quality CD playback or the full magnificence offered by the SA-CD format. Featuring a quick and reliable working mechanism with a black surface to prevent any distortion of the laser light, the digital data is then processed by a Crystal CS4397 D/A converter.